

CAMP SHIPSHEWANA SUMMER CAMP 2025



**THIS IS
WHERE**

YOU BELONG



**FOR IF WE LIVE, WE LIVE TO THE LORD, AND IF WE DIE, WE DIE TO THE LORD.
WHETHER WE LIVE OR DIE, WE ARE THE LORD'S.**

ROMANS 14:8

**For more info or to
register online visit:**

WWW.CAMPSHIPSEWANA.ORG/CAMPS



**Financial
Assistance
Available**

CAMP SHIPSHEWANA

2025 EXECUTIVE DIRECTOR LETTER TO PARENTS



DEAR CAMPER FAMILIES,

Do you wish to Belong? It is the most basic desire of human nature. We were created to be in a relationship. Family. Friends. Colleagues. Social Clubs. Hobbie Groups. But . . . Do you BELONG to the Lord?

That is what is most important. Send us your loved ones to enjoy Camp Shipshewana. Give them a place to BELONG!

It is our desire to guide our campers to BELONG to something valuable, real and eternal.

There is peace when connected to God. The commitment to follow the teachings of Jesus offers comfort in the journey of life. We will memorize Bible verses. We will worship, play & make friends that will impact our life for many years.

This summer at Camp Shipshewana 2025, our 215+ campers will be learning how to SEEK Jesus as the answer to all of life's questions. Our twelve college age Summer Staff enjoy teaching, hanging out, eating, and praying with campers all day and around a glowing campfire. Our campers will enjoy new activities, new friends & a mighty God. Will you send us your loved ones?

Please pray for our summer planning, promotion, and recruitment efforts. This is a high task focused time of year as we; create promotional materials, connect with potential staff and communicate with camper families. Thank you.

Please send us your loved ones! Encourage them to bring a friend or two. This may be a summer that creates an eternal difference in their life.

YOU BELONG!

FOR IF WE LIVE, WE LIVE TO THE LORD, AND IF WE DIE, WE DIE TO THE LORD. WHETHER WE LIVE OR DIE, WE ARE THE LORD'S.

ROMANS 14:8

REMEMBER: You can attend for FREE! Register three new campers to attend with you.

Camp Shipshewana offers an overwhelming value at a fair price. The Brethren Retreat at Shipshewana Lake provides a valuable and distinctive opportunity for your family! Campers will engage in new adventures. They will share with peers from diverse backgrounds in a safe environment. College-age staff will lead worship services, teach eternal truths during Bible studies, and share testimonies at campfires. There are numerous opportunities for campers to make spiritual discoveries, as well as develop friendships which will last a lifetime! Invest in the eternal future of your loved ones! Sign them up for Camp Shipshewana today!

Check out our website for details to obtain financial assistance. The Brethren Retreat at Shipshewana Lake desires that any child be able to attend camp despite stressed family finances. We understand that there are certain situations that make families unable to afford camp fees for their children. For this reason, the Brethren Retreat has designated a "Campership Fund" to provide financial assistance to families in need.

Please call me if you have any questions about attending a Camp Shipshewana program. I desire to make Camp Shipshewana a valuable and distinctive experience for you and your child.



See ya around the campfire,

Rick Miller
Executive Director

WHAT'S NEW IN 2025?



NEW ACTIVITY

Axe Throwing: How is your aim? Test it out on the newly built axe throwing range (age 13+ with a signed parental liability waiver).

Miniature Golf: We are building a 9 hole miniature golf course. Come . . . Play with us!

GIVE A GREAT GIFT!

Send your loved ones to Camp Shipshewana as a gift from you. This could be a Birthday gift, a Christmas gift, or an "I Love You" gift. You can impact youth with the salvation message by giving them a memorable experience which will change their eternal future. That's more valuable than any plastic toy that comes in a cardboard box or a digital device that distracts their attention. Did you know that several of our campers have heeded the call to full time ministry? Buy your loved one a gift to attend Camp Shipshewana...or offer a scholarship gift that provides any child to attend Camp Shipshewana this summer! You will be blessed for this outreach effort.

WACKY WEDNESDAY

Camp Shipshewana has officially named Wacky Wednesday as a camp tradition! Every Wednesday during camp, we encourage everyone to dress as crazy as possible. You can wear hats, wigs, outdated clothes, goofy clothes, fake glasses, face paint, mismatched shoes, or anything else you can think of! Our only rule is that all clothing is appropriate for the camp setting. NO MASKS! So, bring your Wacky Wednesday outfit to Camp Shipshewana!

ACTIVITIES

Air Hockey, Airo-Sport, 10' Aqua Jump & 7' Ice Berg, Archery, Basketball, Bible Stories, Bible Dramas, Boating, Campfire, Canoeing, Canteen/ Snacks, Carpet ball, Challenge Course Elements, Competition & Tournaments, Field Games, Football, Frisbee Golf, Handcrafts, Hi Li, Hiking, Horizontal Traverse Wall, Kayaks, 9-Square-in-the-Air, Octaball, Ping-Pong, Puppetry, Shuffle Board, Skit Night, 6' Pushball, Spike ball, Swimming, Singing, Table Soccer, Talent Night, Tether Ball, 3 Cross Vesper Stage, Sand Volleyball, Whoosh floating water mat ...and LOTS MORE FUN!!



WWW.CAMPSHIPSEWANA.ORG/CAMPS



2025 BIBLE CAMPS

Registrations paid in full by May 31st receive a gift certificate redeemable in the Brethren Retreat's Novelty Nook!

WWW.CAMPSHIPSEWANA.ORG/CAMPS

GRANDCAMP

June 6-8 (Friday-Sunday)
4-14 yr olds & Adult(s)
2 nights/5 meals

Registration: 6:30 pm
Camp Concludes: Sunday noon

FEE: \$152 ea*

Deposit: \$100 ea
Balance Due May 31st: \$52 ea

It's only a weekend but a lifetime of memories. This is a great opportunity to create a life-long memory with your Grandchild or Grandparent. The Grand Camp schedule will be full of choices to allow you to spend time in a variety of activities to enhance your Grand Camp experience. Only a few large group activities will be planned during this 2-day camp. Lodging will be dormitory style in the Retreat Haus. ***This camp coincides with Parent-Child Camp.***

PARENT - CHILD CAMP

June 6-8 (Friday-Sunday)
4-14 yr olds & Adult(s)
2 nights/5 meals

Registration: 6:30 pm
Camp Concludes: Sunday noon

FEE: \$152 ea*

Deposit: \$100 ea
Balance Due May 31st: \$52 ea

Parents – What are you doing to nurture the spiritual formation of your child? Take them to Camp Shipshewana this year to establish a strong foundation between you and your children. There are many fun activities to choose from to create life-long memories to share. Come to Camp Shipshewana and enjoy activities like swimming, canoeing, crafts, Bible stories, a campfire, games and archery. The Parent-Child Camp schedule will be full of choices to allow you to spend time in a variety of activities to enhance your camp experience. Lodging will be dormitory style in the Retreat Haus. Bring the whole family! ***This camp coincides with Grand Camp.***

IGNITE CAMP

June 15-21 (Sunday-Saturday)
11-14 yr olds
6 nights/17 meals

Registration: 3:30 pm
Closing Program: Sat. 10:00 am

FEE: \$510 *

Deposit: \$275
Balance Due May 31st: \$235

Ignite your life with new experiences, special friends, and a stronger faith. Ignite Camp involves many interesting recreational activities that challenge Jr. Hi students to cooperate as a group in order to succeed. Ignite Camp embraces the individual needs of a camper seeking Biblical answers to overcome the struggles faced at home, school, and life in general. College-age staff serve as leaders to guide activities and discussions in a secure environment. Campfire testimonies are a traditional favorite of this camp.

**The total camp fee is the sum of the Deposit and the Balance Due payment.*

FUEL CAMP

June 22-28 (Sunday-Saturday)
8-11 yr olds
6 nights/17 meals

Registration: 3:30 pm
Closing Program: Sat. 10:00 am

FEE: \$510 *

Deposit: \$275
Balance Due May 31st: \$235

Find the Fuel to grow your faith and create stronger friendships for a whole week. Fuel Camp is an excellent opportunity for elementary students to develop new friendships and explore the need for accepting Jesus Christ as their personal Savior. Program emphasis includes Bible memorization and promoting friendships. Bible stories and characters are utilized as practical illustrations for the need to be responsible, obey parents, and live honestly. College-age staff serve as role models for campers to emulate these qualities in life. Fuel Camp also involves exciting activities which promote participation and friendly competition in a safe environment.

NEW DATES!



2025 BIBLE CAMPS CONTINUED

BLAZE CAMP

June 15-21 (Sunday-Saturday)

14-18 yr olds

6 nights/17 meals

**NEW
DATE!**

Registration: 3:30 pm

Closing Worship: 10:00am, Saturday

FEE: \$510*

Deposit: \$275

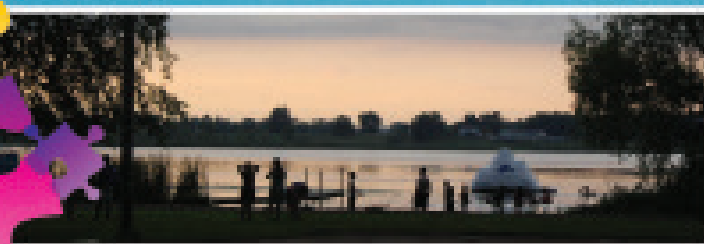
Balance Due May 31st: \$235

Blaze a trail into life with passion and power to serve Jesus Christ. Blaze Camp offers distinctive memories developed in a unique community of St. Hi students and young adult leaders. Campers are guided by young adult couples to answer questions about relationships, college, careers, and God's will for their lives. Life-long friendships are welded together as campers share their fears and hopes for the future. Many opportunities to experience leadership roles allow campers to develop Christian leadership skills. The love of Jesus Christ shared in Blaze Camp is an assurance of security as the future unfolds. Experience Blaze Camp to help power your future.

**The total camp fee is the sum of the Deposit and the Balance Due payment.*

Registrations paid in full by May 31st receive a gift certificate redeemable in the Brethren Retreat's Novelty Nook!

WWW.CAMPSHIPSEWANA.ORG/CAMPS



MINI CAMP

July 20-22 (Sunday-Tuesday)

6-8 yr olds

2 nights/6 meals

Registration: 3:30 pm

Closing Program: Tuesday 4:30 pm

FEE: \$185*

Deposit: \$125

Balance Due May 31st: \$60

Mini Camp is a short version of other Bible Camps for early elementary students. Program emphasis includes exploring "Who is Jesus?", learning the Books of the Bible, being responsible for self, and stressing the need to obey parents. Mini Camp also involves time for many simple and fun games for the campers to participate in. Mini Camp is an excellent program, providing young children a chance to develop confidence and independence, as well as familiarizing campers with the facility of the Brethren Retreat at Shipshewana Lake for many years of enriching camp memories.

C.I.T. CAMP

14 yrs old by September 1st

Registration: 3:00 pm, Sunday

Camp Concludes: 12:00 pm, Saturday

FEE: \$147* (5-day camp session)

FEE: \$109* (4-day camp session)

Deposit: \$100

Balance Due May 31st: \$54

C.I.T. Camp is a weekly counselor training program to develop servant leadership characteristics. Only five C.I.T. positions are available each camp session. C.I.T. Campers share in developing a team bond, daily devotions, a facility improvement project, large group camper activities, support roles in camp food service & housekeeping, managing the Cantones, exploring opportunities for Christian camping careers, and a special C.I.T. team outing. C.I.T. Camp is hard work with lots of fun. Explore God's call for your life through a week of serving as a C.I.T. at Camp Shipshewana 2025.



2025 ADVENTURE CAMPS

Jr Hi WILDERNESS Horseshoe Acres Recreation Area

June 29 - July 5 (Sunday-Saturday)

13-16 yr olds

6 nights/17 meals /100 miles

Registration: 3:00 pm **Closing Program:** Saturday 10:00 am

FEE: \$495* **Deposit:** \$275 **Balance Due May 31st:** \$220

Canoeing! Hiking! Climbing! Many adventures await Jr. Hi Wilderness campers exploring the NE Indiana area. Fascinating opportunities to explore God's creation in on a quiet rivers, various hiking trails, and in challenges above ground. Enjoy a week learning how to survive in a tent and eat food cooked over a campfire. Friday will be a time of reflection and recreation. Daily devotionals and campfires inspire campers and staff alike. Jr. Hi Wilderness campers experience biblical applications through various activities. Sign up to experience a whole new adventure! This new itinerary promises to create memories which will last a lifetime. **Campers may attend this camp for \$425.00 if registered and attend another 6-day Camp Shipshewana 2025 session.**

**ITS
BACK!**

PIONEER CAMP

Horseshoe Acres
Recreation Area

July 6 -12 (Sunday-Saturday)

10-12 yr olds

6 nights/17 meals /4 excursions

Registration: 3:00 pm

Closing Program: Saturday 10:30 am

FEE: \$465* **Deposit:** \$275

Balance Due May 31st: \$190

Enjoy a week of wilderness camping on Camp Shipshewana's Horseshoe Acres! Pioneer Campers will set a base camp near the picnic shelter on Horseshoe Acres. Each day, campers will pioneer to different locations to experience God's creation. Pioneer campers may canoe on a gentle river, hike through county parks, conquer a challenge course, and visit a Nature Center. Campers will learn how to set up and pack away their tents, cook meals over a fire, and other wilderness skills. Daily adventures will begin with a devotional. A time for evening snacks, reflection, and praise around a crackling campfire will conclude each day. **Please join us for the FREE Family Picnic after the Closing Program on Horseshoe Acres! Campers may attend this camp for \$405.00 if registered and attend another 6-day Camp Shipshewana 2025 session.**

FAMILY TENT CAMP

July 11-13 (Friday-Sunday)

4-14 yr olds

2 nights/5 meals

Lodging will be in tents on Horseshoe Acres or East Campus

Registration: 6:30 pm

Camp Concludes: Sunday 10:30 am

FEE: \$152* **Deposit:** \$100

Balance Due May 31st: \$52

Lets Go Camping! It's only a weekend but a lifetime of memories. This is a great opportunity to create a life-long memory with your child, parent, or grandparent. The camp schedule will include a variety of activities to enhance your experience during this 2-day camp. Lodging will be in tents. Food will be prepared over a fire. Fun!

**The total camp fee is the sum of the Deposit and the Balance Due payment.*

2025 SPECIALTY CAMPS

SPORTS CAMP Laymans Lodge

July 13-17 (Sunday-Thursday) **9-13 yr olds 4 nights/12 meals**

Registration: 3:30 pm **Closing Program:** Thursday 4:30 pm

FEE: \$362* **Deposit:** \$200 **Balance Due May 31st:** \$162

Do you enjoy sports? Wanna mix it up on the court, field, or in water? Then Sports Camp is for you! Enjoy many various sporting activities, contests & tournaments such as: tetherball, 1-on-1 & 3-on-3 basketball, a challenging obstacle course, swimming, beach-style volleyball, shuffleboard, ping pong, air hockey, soccer, boating races, archery, punt, pass & kick. There are many opportunities for competitions, as individuals and in teams. A fitness routine will begin in the morning to help wake up the campers . . . and staff. The camp objective is to illustrate how we all have many talents to make up the body of Christ. We will also discuss the character habits for winning and losing. **Campers may attend this camp for \$295 if registered and attend another 6-day Camp Shipshewana 2025 session.**

Campers will spend up to four hours a day with this specific activity. The rest of the day will include many other favorite camp activities. Campers will be involved in a daily Bible lesson, worship, and devotions. Each day will conclude with a snack and Campfire.

ARCHERY CAMP

Laymans Lodge

July 13-17 (Sunday-Thursday)

9-13 yr olds

4 nights/12 meals /1 excursions

Registration: 3:30 pm

Closing Program: Thursday 4:30 pm

FEE: \$362* **Deposit:** \$200

Balance Due May 31st: \$162

Take aim at the Bulls eye! Learn how to safely shoot a bow and arrow. Enjoy various games and challenges on the archery range. Campers will spend up to four hours a day with this specific activity. The rest of the day will include many other favorite camp activities. Campers will be involved in a daily Bible lesson, worship, and devotions. **Campers may attend this camp for \$260.00 if registered and attend another 6-day Camp Shipshewana 2025 session.**



2025 CAMPING GEAR

TECHNOLOGY FAST CHALLENGE:

To obtain the best Camp Shipshewana experience, we challenge you to consider a technology fast during your camp session. Break free from the distractions of the world. Provide an opportunity to hear the still quiet voice of the Holy Spirit speak to you. Please leave all electronic devices at home or turned off. You may be surprised what God has to say to your heart during camp.

PLEASE LEAVE AT HOME:

We desire to create a safe atmosphere free of distractions. Our objective is to create a temporary community for God to grow lives. We understand that in our world of connectedness, anxiety can develop while being unplugged from loved ones. We ask that parents assist us in maximizing their child's outdoor camp experience by leaving the following items at home:

Cell Phones, Digital Games, Electronic Devices, Radios, Excessive Snacks, Paintball Guns and Balls, Sharp Objects & Knives, Skateboards, Posters, Fireworks, Lighters & Gum.

WHAT TO BRING:

A Friend or Three!
Modest Clothing*
Jacket/Sweatshirt
Outdoor Clothing
Wacky Wednesday Outfit
Comfortable Shoes
One-Piece Swimsuit
Aqua Shoes
Rainwear
Towel/Washcloth
Toiletries
Shorts & Shirts
Underwear & Socks

Sunscreen
Insect Repellent
Laundry Bag
Sleeping Bag & Pillow
Blanket
Flashlight
Bible
Disposable Camera
Notebook & Pen/Pencil
Enthusiasm
Smiles!
Adventure campers will receive specific gear list upon registration.

*INAPPROPRIATE CLOTHING POLICY

Inappropriate clothing includes items that:

- Expose the midriff or undergarments
- Promote alcohol, tobacco, or profanity
- Display obscenity, vulgarity, or violence

As need arises, parents may contact their child through email, US postal mail, Facebook fan page, and camp office fax. In an emergency, please contact the Brethren Retreat at 260.768.4519 (office) or 260.336.2470 (Executive Director's Mobile). You are encouraged to check our website for daily activity updates and pictures of your camper child.



CAMP SHIPSEHWANA 2025 REGISTRATION

BRETHREN RETREAT
at Shipshewana Lake
REFRESH YOUR LIFE

☐ First Time Camper

☐ Early Bird

Name _____ Sex ____ Age ____ Birth ____/____/____ Grade Fall '25 _____

Address _____ Shirt Size: *Adult* - S M L XL 2X *Youth* - S M L

City _____ State _____ Zip _____ Church _____ Pastor _____

Parent /Guardian _____ Parent's Place of Employment _____

Home Phone (_____) _____ Occupation _____

Cell Phone (_____) _____ Parent's Work Phone (_____) _____

Parent E-Mail _____ Camper E-Mail _____

Bunkmate (1 ONLY - MUST BE RECIPROCAL REQUEST TO BE HONORED) _____

CAMP ATTENDING: (Check ONE only) CAMP DATES: _____ This is my ____ year at camp.

2-DAY CAMPS ☐ Parent Child ☐ Grand Camp ☐ Mini Bible ☐ Family Tent

4-DAY CAMPS ☐ Archery ☐ Sports

6-DAY CAMPS ☐ Ignite ☐ Fuel ☐ Pioneer ☐ Blaze ☐ Jr Hi Wilderness

PAYMENT INFORMATION: Please note the cancellation & refund policy listed in this registration brochure. For your financial convenience, families may choose to make four monthly payments by April 28th, May 28th, June 28th, July 28th. Credit card payments can be accepted at our website: www.brethrenretreat.org.



Camp Registration Fees \$ _____ ☐ Deposit Only ☐ Full Payment

The total Camp Registration Fee equals the sum of the Deposit Payment and Balance Due Payment.

Andrew Club (less \$40.00) - \$ _____ Andrew Club Friend: _____

Camp Photo (\$6 each) + \$ _____

Staff Photo (\$6 each) + \$ _____

Campership Fund + \$ 10.00 ☐ YES! ☐ No (Your tax deductible gift helps campers attend camp)

PAYMENT: \$ _____ ☐ Enclosed ☐ Online payment

Scholarship Request: ☐ Partial @25% ☐ Full @75% (Assistance must be requested by Financial Aid Application)

DEPOSIT: Due May 31st Balance Due **PAYMENT:** Due by first day of camp
Payment in full due by May 31st to earn a gift certificate redeemable in the Brethren Retreat's Novelty Nook

Mail payment to: BRETHREN RETREAT AT SHIPSEHWANA LAKE • 9095 W 275 N • Shipshewana, IN 46565-9437

GO TO CAMP FREE!

Register three first time campers to attend Camp Shipshewana with you and receive a FREE Camp Shipshewana registration. This discount is not available for 2-day camp sessions (Mini Camp, Parent-Child & Grand Camp).

Camper #1: _____

Camper #2: _____

Camper #3: _____

EMAIL ADDRESSES NEEDED:

Help us communicate with you more effectively. Please record your family's email addresses in the proper space on the registration form.



Become a fan of the Brethren Retreat at Shipshewana Lake on Facebook.

Follow us on Twitter and Instagram:
@BrethrenRetreat.

CAMP SHIP SHEWANA 2025 MEDICAL FORM

Camper's Name _____

Emergency contact other than parent: _____

Name _____

Relationship: _____ Phone: _____

PARENT'S AUTHORIZATION

This Health History is correct so far as I know, and the person herein described has permission to engage in all prescribed retreat activities, except as noted by me below. I recognize that certain hazards and dangers are inherent in retreat events and programs. I further understand that my child shares responsibility for his/her safety and I have instructed my child in the importance of knowing and abiding by the Brethren Retreat's rules, regulations, and procedures for the safety of retreat participants. In the event of an extreme circumstance that both parents are unavailable and none of the listed emergency contacts are reachable in an emergency, I hereby give permission to the physician selected by the Brethren Retreat to secure proper treatment for, hospitalize, provide anesthesia, or perform surgery, for my child named above and to order injections such as anesthesia – but I DO NOT authorize any vaccines. Should it be necessary for him/her to return home during the week because of illness, accident, homesickness, or conduct, I will abide by the camp's decision in this matter and provide transportation.

I also give permission for the person named to be photographed and/or videotaped for promotional purposes.

Signature _____ Date _____

Insurance Provider _____ # _____

HEALTH HISTORY (Check if applies)

Immunization: ☐ Complete ☐ Incomplete

- | | | |
|--|--------------------------------------|--|
| <input type="checkbox"/> Allergies | <input type="checkbox"/> Asthma | <input type="checkbox"/> Bladder Control |
| <input type="checkbox"/> Convulsions | <input type="checkbox"/> Diabetes | <input type="checkbox"/> Ear Infections |
| <input type="checkbox"/> Hay fever | <input type="checkbox"/> Headaches | <input type="checkbox"/> Insect stings |
| <input type="checkbox"/> Ivy Poisoning | <input type="checkbox"/> Medications | <input type="checkbox"/> Special Diet |

Date of Tetanus Booster (IMPORTANT!) _____

Behavior Traits/Disorders _____

Medications * _____

Operations in last 12 months _____

Specific restrictions _____

Explain above/other _____

* Parents will be asked to complete additional information for prescriptions being administered during camp.

HOW TO REGISTER

- Use a separate registration for each camp attending and each camper.
- Complete all of the REGISTRATION/ & MEDICAL FORM!
- Invite your friends to attend with you to obtain discounts, gifts and free camp certificates
- For your financial convenience, families may choose to make four monthly payments by April 28th, May 28th, June 28th, July 28th. Credit card payments can be accepted at our website www.campshipshewana.org
- Incomplete or late camp fee payments may automatically cancel the registration which will result in a \$100.00 administration fee being retained (see cancellation policy).
- All youth may attend Camp Shipshewana, regardless of church affiliation.

CANCELLATION POLICY

Cancellations must be submitted in writing no later than 30 days prior to attendance to obtain a refund less a \$100.00 administrative fee or the deposit paid (whichever is less).

Cancellations submitted in writing with less than 30 days notice prior to attendance will be refunded only 25% of the total registration fee.

Camp fees are nonrefundable and non-transferable if a camper is withdrawn from a camp session early due to homesickness or dismissed for disruptive behavior.

Camp fees will be prorated in cases of campers withdrawn from a camp session due to an accident or illness.

No refunds are extended if a camper is removed from a camp session without written consent of a health care specialist.

2025 FYI

WWW.CAMP SHIP SHEWANA.ORG/CAMPS

REGISTER EARLY!

Some camp sessions fill up quickly. Register early to guarantee your spot! Registrations beyond capacity will be put on a waiting list.

FOR THE SAFETY OF ALL CAMPERS:

Visitation is permitted only on opening and closing days. We desire to keep the campus free from unexpected disruptions of the camp program. Unannounced visitors will be asked to leave the premises immediately.

HOMESICKNESS:

The Brethren Retreat Staff are well-prepared to assist your child with issues related to homesickness. We understand that being separated from your loved one can cause emotional and physical anxiety for a child, as well as the parent. Please assist us in helping your family grow through the homesickness process by not encouraging your child to call home. Instead, focus on the positive aspects of a camp experience, like fun counselors, new friends, and exciting activities. Thank You!

EARLY PICK UPS:

Please make written arrangements at registration for early pick ups and provide a reminder call the day of the early pick up. There are NO early pick ups for Adventure Camps.

FINANCIAL ASSISTANCE:

Please inquire at your church about financial support to attend a Christian camp. Families may apply for financial assistance through the Brethren Retreat's *Campership Fund* by requesting an application at www.brethrenretreat.org or calling the Camp Office.

CANTEEN & SNACKS:

During Bible Camps and Specialty Camps, the Canteen is open each afternoon for snacks. Bible Camp and Specialty Camp fees include 2 items from the Canteen each afternoon. Adventure Camps pack a snack for each evening. Please avoid bringing excessive snacks to camp. Adventure Campers may wish to bring \$30.00 to purchase souvenirs at the various activity centers.

SPECIAL RATES & CAMP PACKAGES:

Register with payment in full by May 15th to receive a gift certificate redeemable in the Brethren Retreat's Novelty Nook. Register a 1st time camper to attend Camp Shipshewana with you to earn membership into the ANDREW CLUB. Andrew Club members will receive a \$40 credit toward their camp fees, a special gift at closing program, and a FREE registration to Winter Blast 2025 or Spring Break Home Mission Trip! (not available for Family Members and Mini-Campers). Look for special package rates to attend more than one camp session at a discounted rate. Visit our Facebook page to find a special discount or Incentive that may be offered.



SOUVENIRS:

The Brethren Retreat's Novelty Nook will be open for campers & parents to purchase a favorite Camp Shipshewana souvenir. The Novelty Nook is located in the lower level of the Retreat Haus. Help promote the Brethren Retreat with your favorite souvenir sweatshirt, t-shirt, backpack, water bottle and more!

FREE LIMITED-EDITION CAMP T-SHIRT:

Every Camp Shipshewana registration paid in full will receive a limited-edition camp t-shirt highlighting the camp theme.

CAMP PICTURES:

A laminated 8"x10" group photo highlighting all participating campers will be available each camp session for only \$6.00. A Camp Shipshewana Summer Staff Team picture featuring all your favorite counselors will also be available to purchase for \$6.00 each. Please indicate on your registration form your desire to order a Camp Picture and a Staff Picture. You can also purchase pictures at the time of registration.



****IMPORTANT** SEND THEM POSTAL MAIL**

Campers (and Counselors) love Mail Call each day. It is very important that you send your camper an encouraging note from home. Please send postal mail early in the week. For the two and four day camps, you may need to send postal mail before your camper leaves home. There is a \$1.50 fee for delivery of E-mail, Facebook messages, text messages, and faxes to Campers.

ACCIDENTS & INSURANCE:

It is the Brethren Retreat's policy that all insurance claims are sent to the parent/guardian's insurance company first.

COME ONE! COME ALL!

Rules for acceptance and participation in the program are the same for everyone without regard to race, color, sex, age, handicap, or national origin.

VANDALISM & DAMAGES:

There will be a minimum of \$75.00/ incident assessed for damages deemed deliberate to the Brethren Retreat facility.

KEEP CAMP BEAUTIFUL:

Help keep the Brethren Retreat beautiful. Avoid littering, graffiti, and vandalism.

GET INVOLVED!

Calling All Camp Volunteers!

Help the Brethren Retreat at *Shipshewana Lake* grow! Volunteer your skills and talents at the Brethren Retreat throughout the year. You can volunteer as an individual or recruit a group to come up for the day. Areas to help include food service, housekeeping, lawn care, simple building maintenance, carpentry, electrical work, plumbing, clerical, program leadership, and many others. *Looking for a retirement opportunity?* We are searching for a retired couple to serve as our Volunteer Coordinators. We have housing if you can supply the gift of service.

Get Involved In 2025

Keep your church informed about Brethren Retreat at *Shipshewana Lake* events and needs. Be a Camp Ambassador. As a Camp Ambassador, you

become the communication link between camp and church. For more details, call the Executive Director at (260)768-4519 or email us at brcship@juno.com

We Love Our Friends

We would like to invite you to join our Friends of Camp Shipshewana Club. Your gift of \$30 per month helps to complete special projects such as: recreation equipment, landscaping, renovations, improvements, and scholarships. Become a Friend of the Camp and learn more about the dynamic ministry of the Brethren Retreat at *Shipshewana Lake*. Send your gift designated for Friends of Camp Shipshewana Club to:

Brethren Retreat at
Shipshewana Lake
9095W 275N,
Shipshewana, IN 46565

We Have Great Resources

The Brethren Retreat at *Shipshewana Lake* has been a member of the Christian Camp & Conference Association since 1973. CCCA is an association of nearly 900 Christian camps in the United States. CCCA provides education, training, resources, and references. Searching for a Christian camp in another state? Need a program idea? Call us – we've got connections!

Let Us Serve Your Church & Family Events!

The Brethren Retreat at *Shipshewana Lake* is available for guest groups year-round. Churches, Families, Home School Associations, Group Homes, Senior Groups, and others may rent the Brethren Retreat facility for retreats and camps. Our food service provides an excellent buffet menu. Give us a call – we'd be glad to serve you! (260)768-4519 or email us at brcship@juno.com.



YOU BELONG

WWW.CAMPSHIPSEWANA.ORG/CAMPS



BRETHREN RETREAT
at Shipshewana Lake
REFRESH YOUR LIFE



Directions To Camp:

Shipshewana is North of U.S. 20 on S.R. 5.
From Shipshewana, take Middlebury Street (C.R. 250N) west 1¼ miles to C.R. 900W, go North ¼ mile to the camp entrance.

www.CampShipshewana.org

9095 W 275 N
Shipshewana, IN 46565
www.brethrenretreat.org
260.768.4519

Return Service Requested

PRST STD
US POSTAGE
PAID
SHIPSHEWANA, IN
PERMIT NO. 6